



Dry construction: assembled partitions , suspended ceilings, floor structures

István Vidovszky PhD

introduction

0

- drywall systems
- dry linings
- suspended ceilings
- acoustic ceilings
- dry screeds
- raised floor system
- attics

systems and products

0



technical performance

1

drywall systems

- height: 2,75 - 10,0 +
- acoustic insulation capacity: 41 - 69 dB
- fire resistance: 0,2 - 1,5 (3,0) h

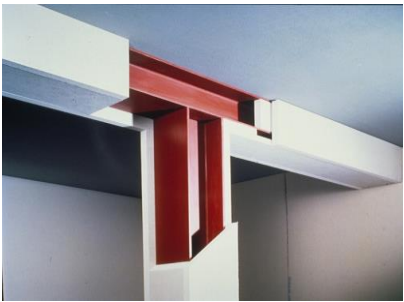
raised floor systems

- fire resistance= 0,5 h
- load-bearing capacity= 5 kN/m²

technical performance

1

fireshields
fire resistance=0,5 - 3,0 h
without framework as well



technical performance

gypsum plasterboard types

1



- | | | |
|------------------------------------|---|----------|
| wallboard | - | Typ A |
| moisture board (impregnated board) | - | Typ H2 |
| fire board (fire resistant board) | - | Typ DF |
| fire-moisture board | - | Typ DFH2 |

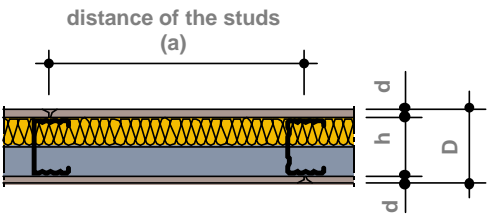
information on the labeling/by the color!!!



wall systems

simple frame single-layer lining

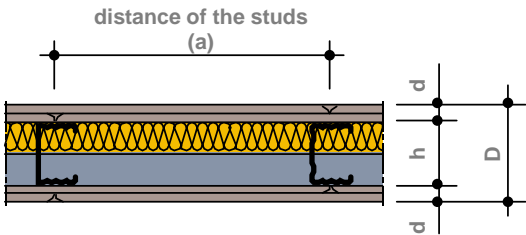
2



wall systems

simple frame double-layer lining

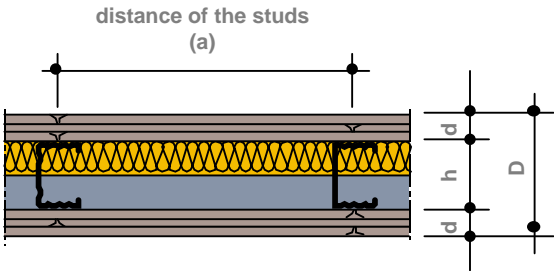
2



wall systems

simple frame triple-layer lining

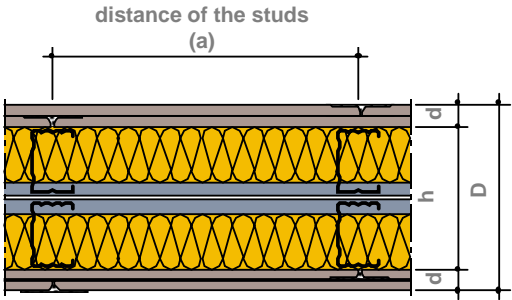
2

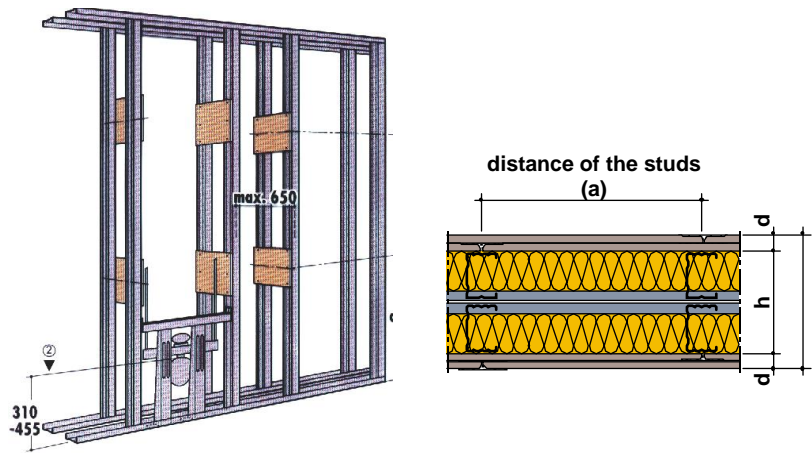
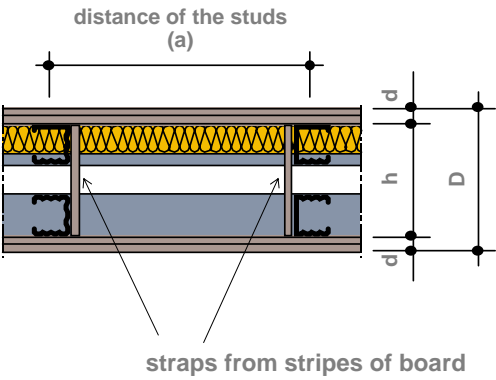


wall systems

twin frame double-layer lining

2

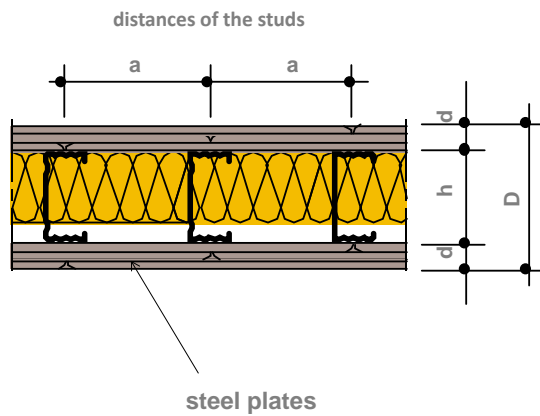




wall systems

security wall – simple frame triple-layer lining + steel plate

2



assembled partition details

2

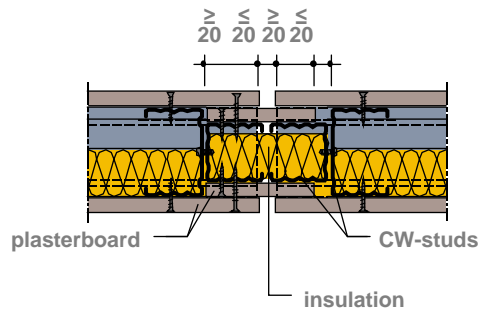
expansion joint is required:

- in every 15 m
- at the geometrical turns of the partitions
- at the dilatations of the superstructure

assembled partiton details

expansion joint

2



Vidovszky – BUTE/BME-Faculty of Architecture – Department of Construction Technology and Management

17.02.2011

assembled partiton details

2

Moving slab-connection joints

- if the expectable deflection of the slab is more than 15mm
- recommended in case of over 7.00 meters of span
- fire-protective or normal
- the figures in the catalogues are valid up to max. 25 mm deflection

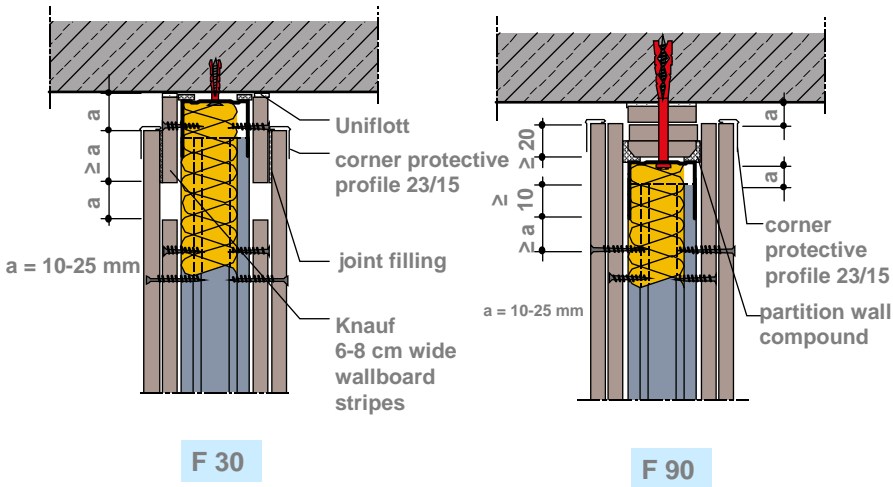
Vidovszky – BUTE/BME-Faculty of Architecture – Department of Construction Technology and Management

17.02.2011

assembled partiton details

moving slab-connection joints

2

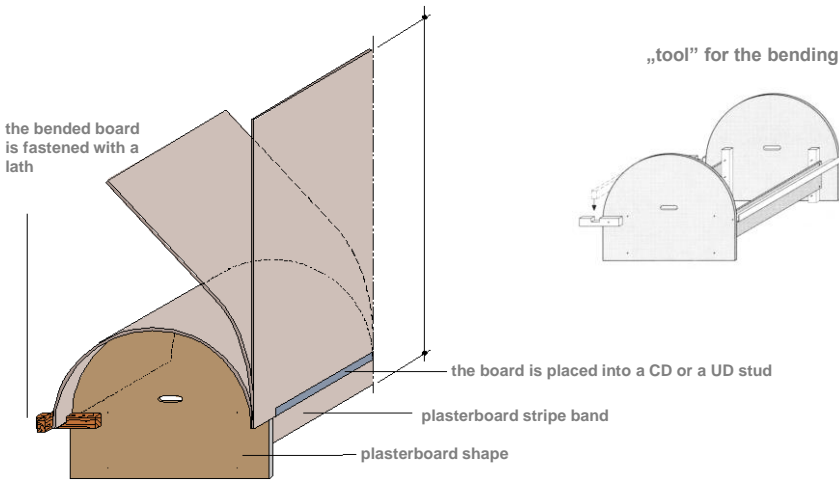


dry lining

bases of dry lining

3

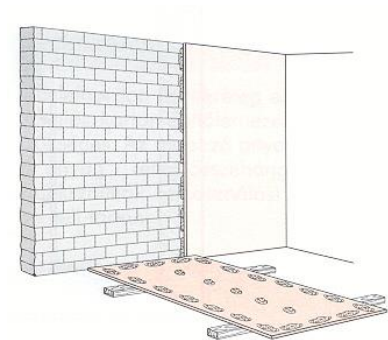
Vaulted surface – wet bending



dry lining

3

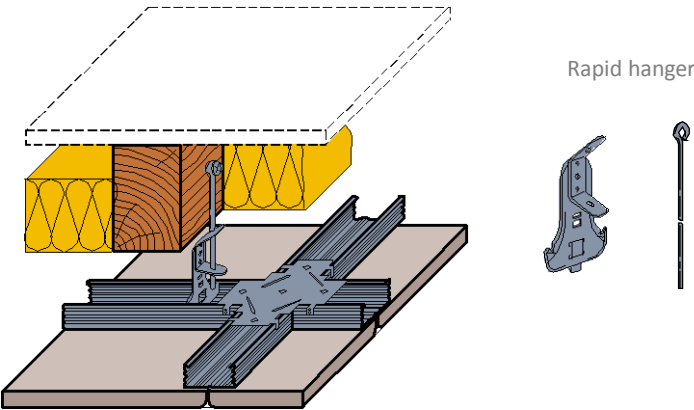
Vapour technique
differing outer boundary system
should be checked
(vapour barrier)



suspended ceiling

4

Supports

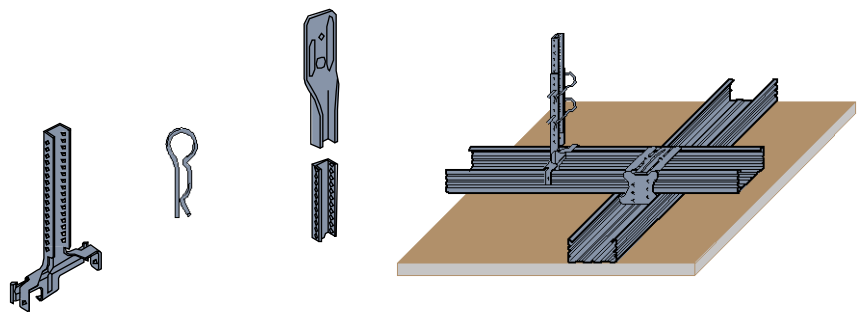


Anchorfix support system > 0.25 and 0.40 kN load bearing capacity

suspended ceiling

4

Supports



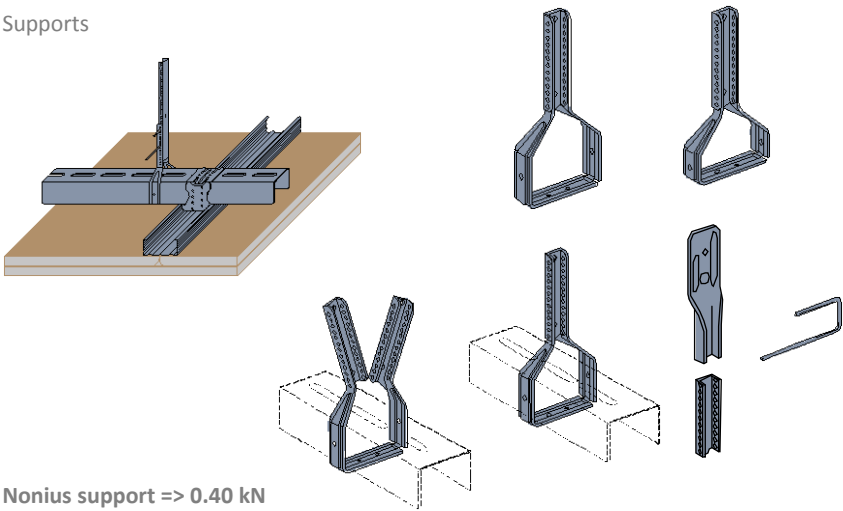
Nonius support => 0.40 kN

suspended ceiling

Suspended ceiling systems

4

Supports

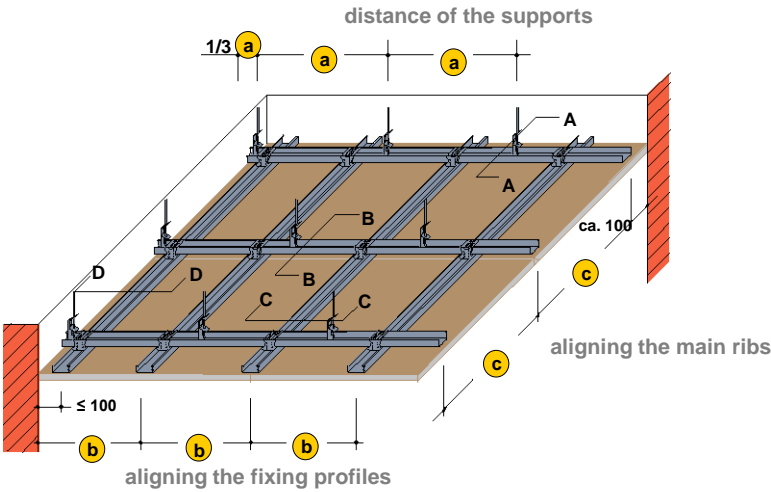


Nonius support => 0.40 kN

suspended ceiling

suspended ceiling with split-level frame

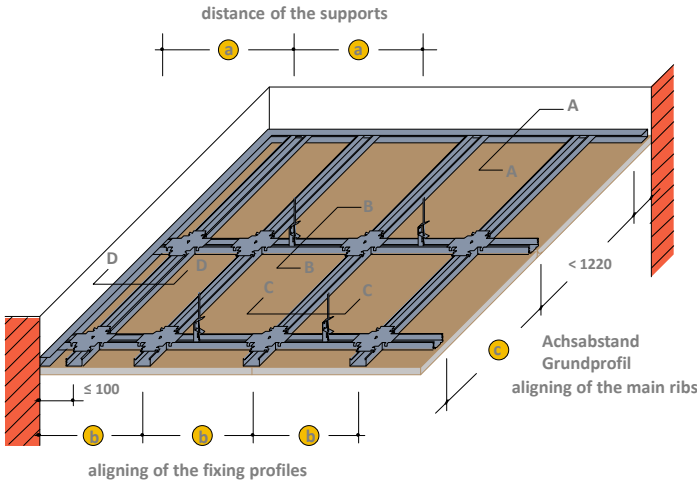
4



suspended ceiling

suspended ceiling with single-level frame

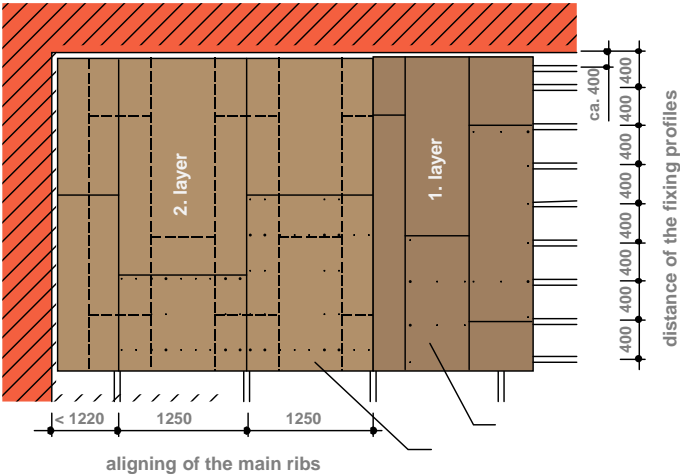
4



suspended ceiling

Lining - aligning of the boards

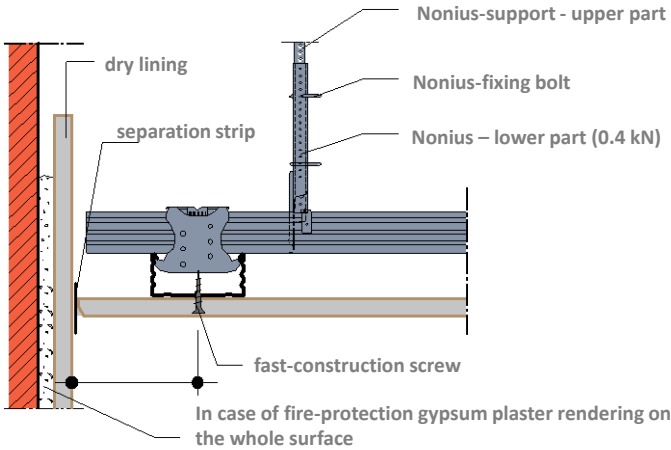
4



suspended ceiling

Suspended ceiling systems

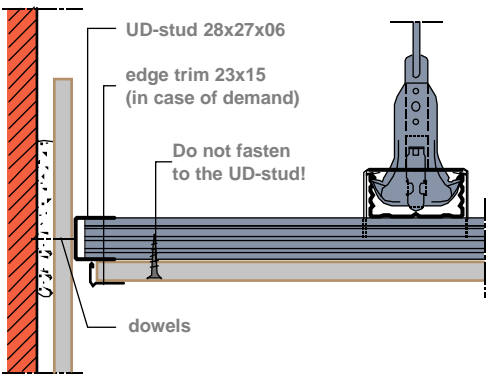
4



suspended ceiling

Fitting to walls with „shadow” joint

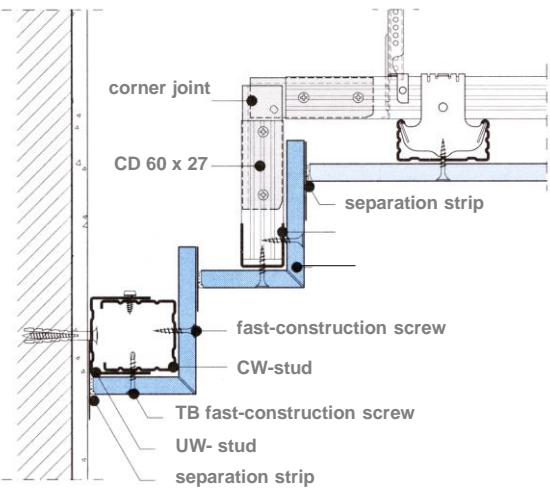
4



suspended ceiling

Stepped wall-connection joint

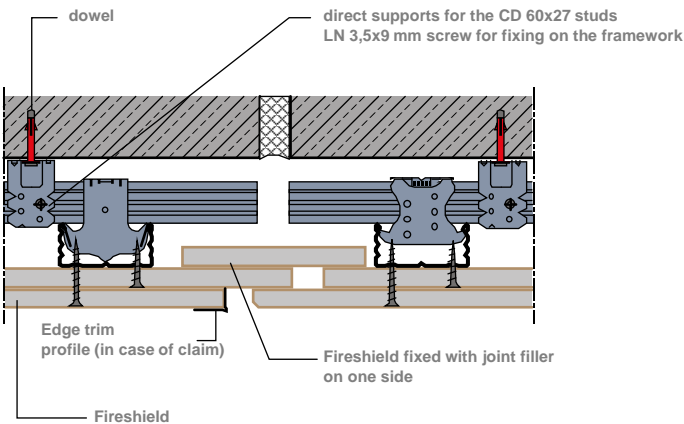
4



suspended ceiling

Movement control joints – in case of fire-protection

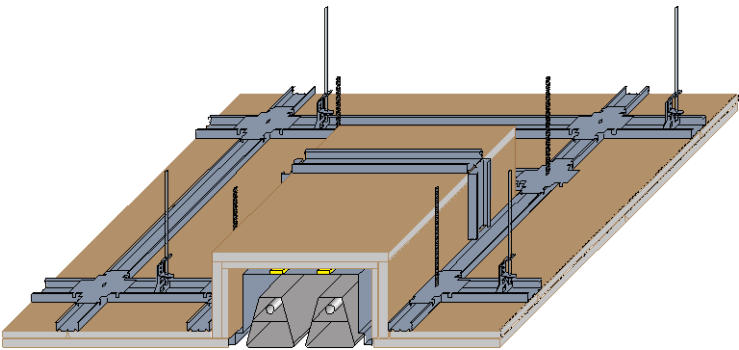
4



suspended ceiling

Installation of electrical fixture mounting box in fire-protective suspended ceiling

4

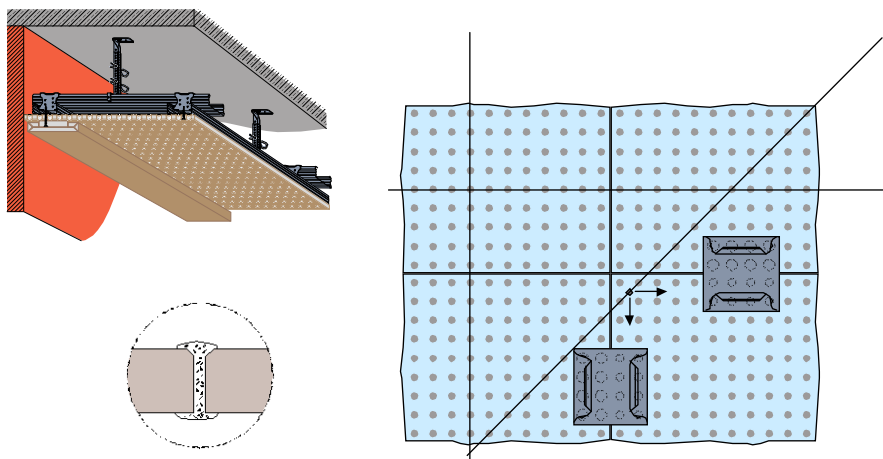


The continuity of the suspended ceiling is ensured by the lining around the lamps.

suspended ceiling

Acoustic suspended ceilings

4



dry sceeds

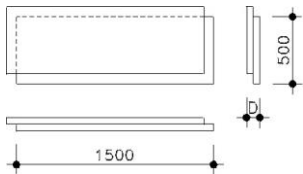
5



gypsum fibre boards:
gypsum in combination with reinforcing
cellulose fibres

two factory-glued 10 or 12,5mm thick
1500 x 500 mm Knauf Vidifloor board

connect the boards with overlapping
(joint staggering) on each sides



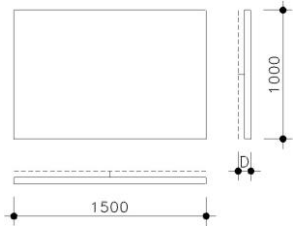
dry screeds

5



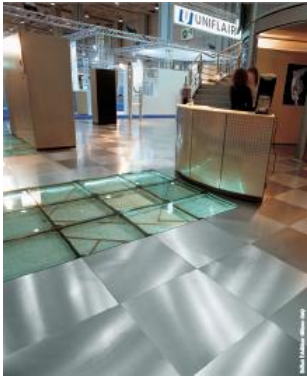
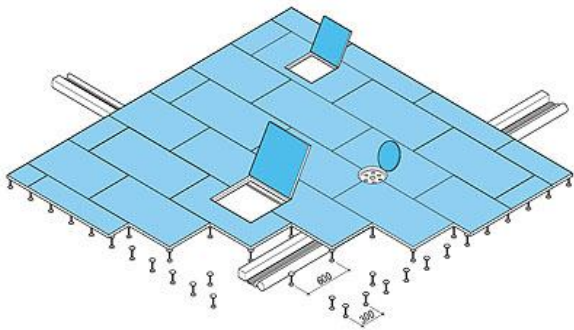
two 10 or 12,5mm thick 1500 x 1000 mm Knauf Vidifloor board are glued together „in situ” for double-layer lining

join the boards with half a board overlapping/joint staggering



raised floors

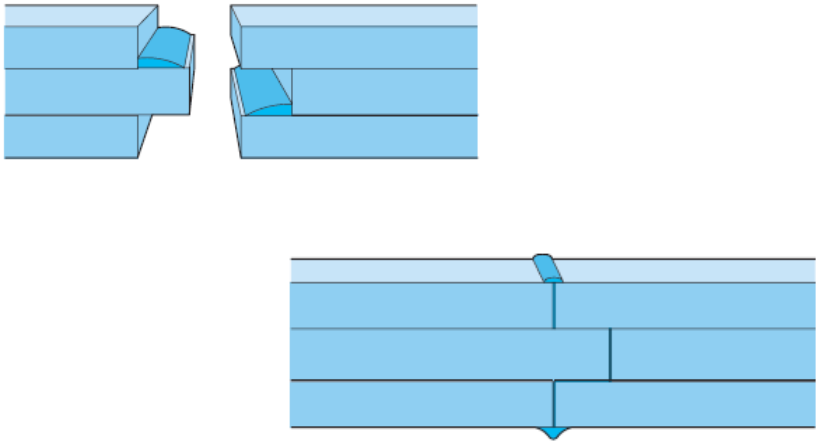
6



raised floors

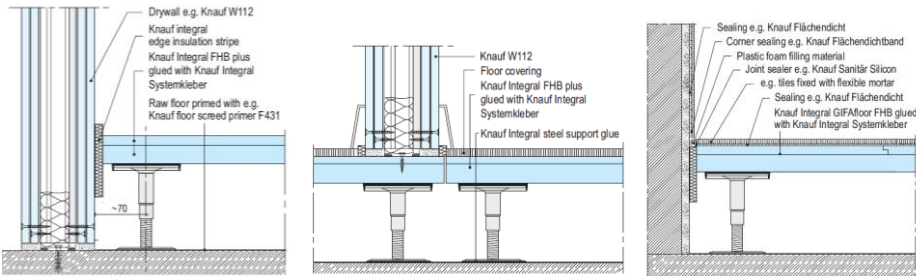
assemble with glue

6



raised floors

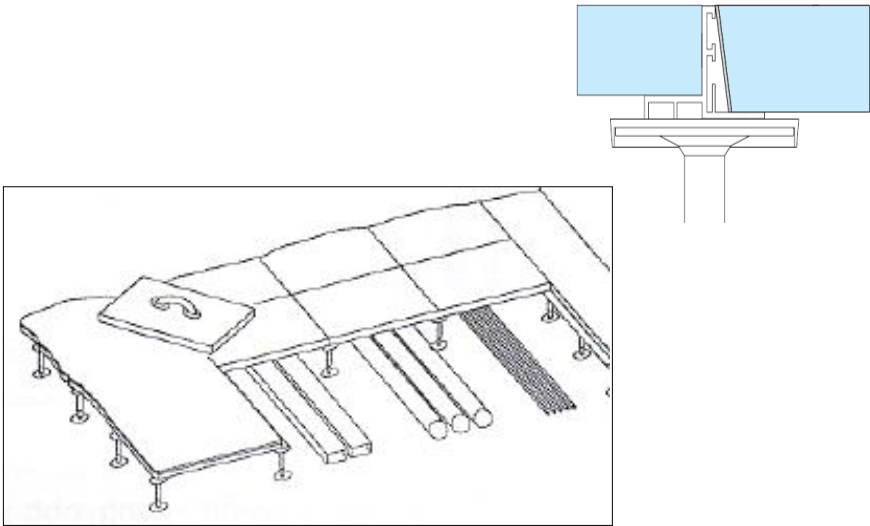
6



raised floors

Combination of hollow and raised floor

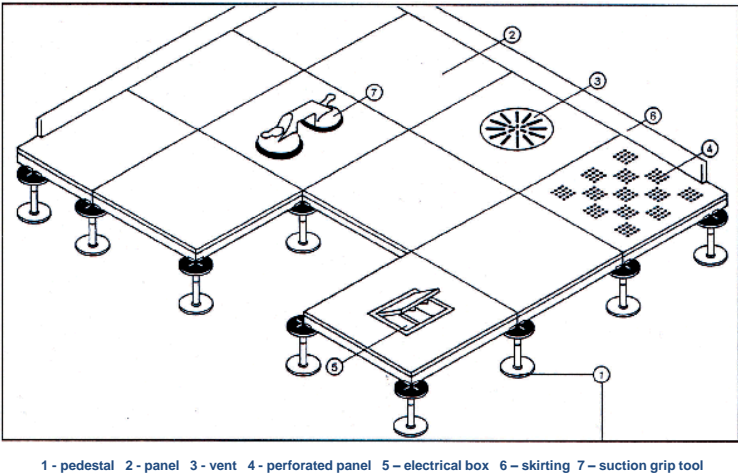
6



raised floors

Structure of raised floors

?



1 - pedestal 2 - panel 3 - vent 4 - perforated panel 5 - electrical box 6 - skirting 7 - suction grip tool

raised floors

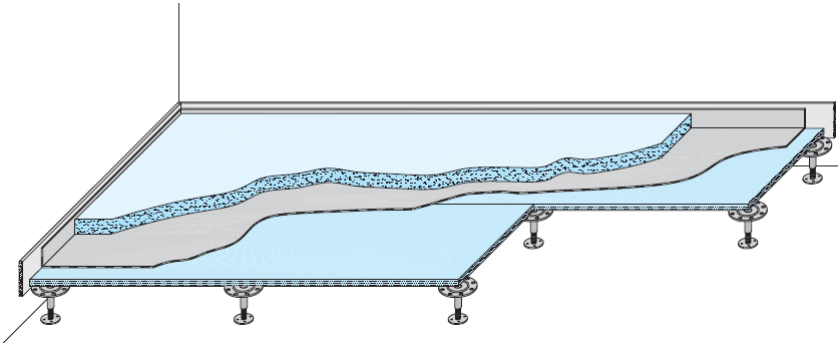
?



raised floors

raised floor system with cast surface

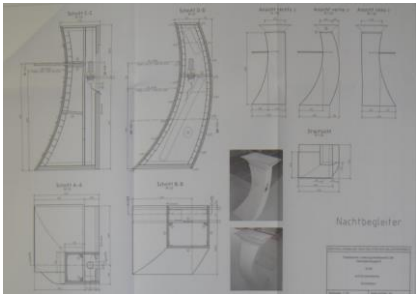
6



targeting work

decoration work

7



Thank you for your attention!

References



- [1] Wiesner György: Knauf általános bemutató (presentation)
- [2] http://www.knauf-gipsfaser.com/knauf/home-gf.nsf/Vidiwall_Vidifloor_en.pdf 2011.11.09.
- [3] <http://www.knauf-gipsfaser.com/knauf/home-gf.nsf/vPagesLookup/home~en> 2011.11.09.
- [4] <http://www.knauf-integral.de/english> 2011.11.09.
- [5] <http://manual.knaufdrywall.co.uk/> 2011.11.09.
- [6] <http://www.knauf.ae> 2011.11.09.